

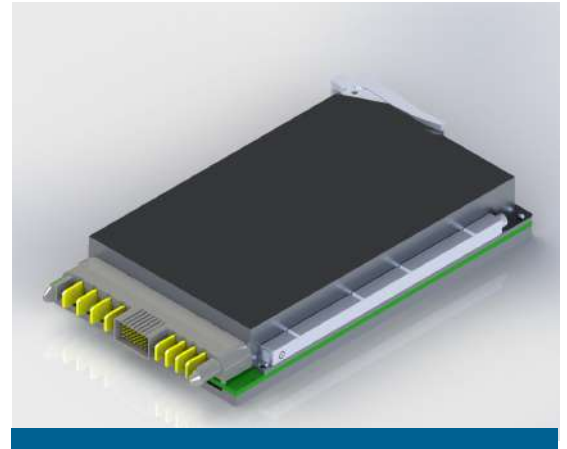
3U Power Supply

With optional VPX Connector

KOLT

Features

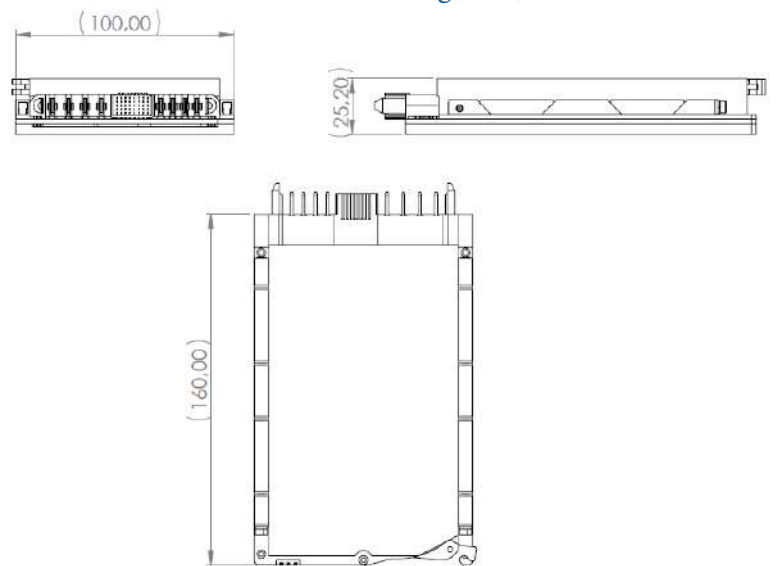
- 3 ϕ , 115 Vac Ungrounded Universal Input
- Isolated 28 Vdc Output
- 28Vdc 200W Output Power
- N8Vdc 2W Output Power
- .100" Right-angle, 60 Amp Signal/Power Combo Socket Strip
- High Efficiency
- EMI Filters Included
- 1.0 Pitch, 3U VPX Form Factor
- Fixed Switching Frequency



KOLT's configurable power supply designed to meet the unique and challenging environment requirements of defense applications. This power supply complies to 3U form factor and can deliver up to 200W output power with high efficiency. Available with short time delivery and custom configurations, KOLT Power Supply is ready for most demanding military applications.

Input Voltage	3-Phase delta, 115 Vac Ungrounded Universal AC Input, 57-63Hz
Output Voltage	28 Vdc 200W Output, N8Vdc 2W Output
Environmental Test	
	Designed to meet;
Temperature	-40°C to +65°C (Storage Temperature) -30°C to +50°C (Operating Temperature)
Humidity/Vibration	MIL-STD-810D/MIL-STD-810G
Shock/Altitude/Salt Fog	MIL-STD-810G
EMI/EMC	MIL-STD-461F CE101, CE102, CS101, CS114, CS115, CS116
Physical Features	
Dimensions	160 x 100 x 25.20 mm

Outline Drawing(mm)



For additional details please contact KOLT.
All Rights Reserved.
Product specifications may change without notice.
info@kolt.com.tr
www.kolt.com.tr